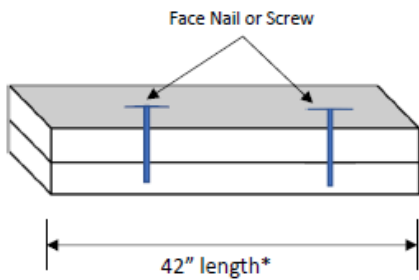
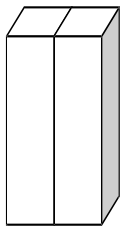


**STEEL GUARD RAIL BASE  
INSTALLATION INSTRUCTIONS**

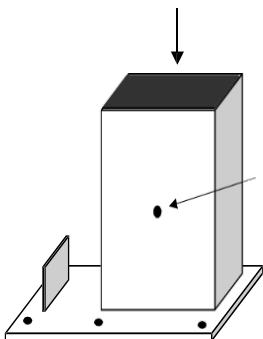
Due to wide variations in substrate conditions, installation guidance should be reviewed by a structural engineer familiar with the project conditions and requirements.



- Prepare two (2) – 2x 4 lengths of approved lumber a minimum of 42" in length.
- Secure the sections together with fasteners or nails into a Post Like assembly.

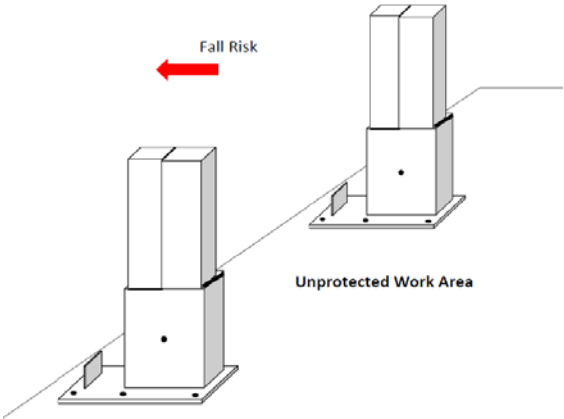


- Insert post into Guardrail Base. Ensure full insertion until post reaches top of metal plate.
- Secure assembled Post to Guardrail Base with 3/8" x 3" Lag Bolt with washer

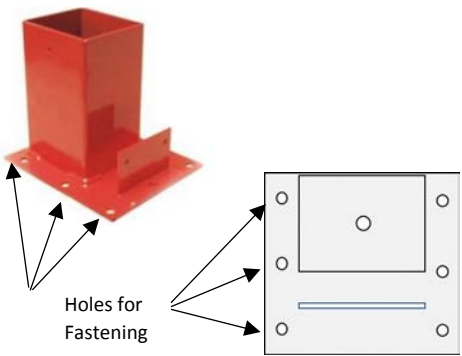




**STEEL GUARD RAIL BASE  
INSTALLATION INSTRUCTIONS**



- Place Guardrail Base - Post Assembly at the perimeter of unguarded work areas. This includes temporary stairs, landings, walkways, parapets, balconies, elevated floor systems in residential and/or commercial construction.
- **WARNING!** OSHA Standards require a maximum of 8' (96") spacing of Vertical Posts.



- Attach the Steel Guardrail Base to unprotected work surface using appropriate fasteners through holes on either side of base.
- **OCM Guardrail Safety Boot should be secured to substrates with a minimum of six (6) Anchors with a minimum pullout of 675 lbs.**
- OCM fastener recommendations are listed below.

OCM provides the following guidance for securing the OCM Steel Guardrail Base to various substrates and appropriate hardware selection:



**Concrete Substrate:** connect the Steel Guardrail Base to Substrate with six (6) 3/8" x 2-1/2" Masonry Expansion Anchors similar to:

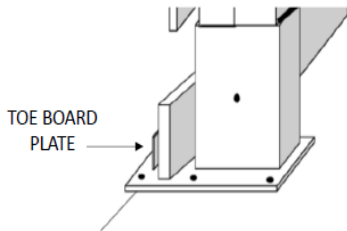
- Powers Stud series by Powers Fasteners
- Trubolt Series by ITW

**Solid Wood Substrate:** connect the Steel Guardrail Base to Substrate with six (6) 3/8 x 3" Lag Screws

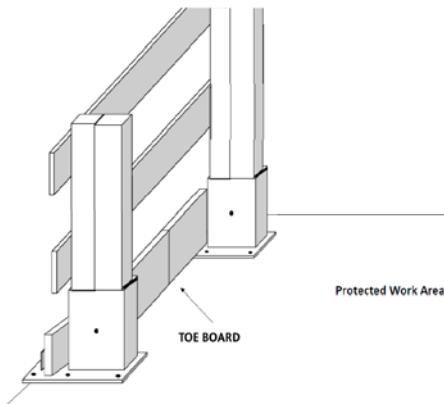
**All Anchors must use a 3/8" dia. 1" O.D. Steel Washer**



**STEEL GUARD RAIL BASE  
INSTALLATION INSTRUCTIONS**



- **Place Toe Boards behind the Toe Board Plate. Secure Toe Board to Base with two (2) 3/8" Lag bolts through holes in Toe Board Plate.**



- **Mid Rails and Top Rail / Hand Rails should be located and secured to Post according to OSHA Guidelines.**

*All recommendations, statements and technical data contained herein are based on tests we believe to be reliable and correct; however, accuracy and completeness of said tests are not guaranteed and are not provided as an express or implied warranty. User shall rely on his or her own information and tests to determine suitability of the product for the intended use and user assumes all risk and liability resulting from his or her use of the product. In the event that a product supplied by OCM, Inc. proves to not meet the OCM, Inc. published dimensional or other specifications of the product, an OCM, Inc. representative will review such product and circumstances to determine whether a replacement is warranted. OCM, Inc.'s and its manufacturer's sole responsibility shall be to replace, at OCM, Inc.'s sole discretion that product or portion of the product which OCM, Inc. deems to be defective, within six months of the delivery of the product. OCM, Inc. disclaims all other warranties or conditions, whether express or implied, including an implied warranty of merchantability or fitness for any particular purpose. In no event shall OCM, Inc. or its parent or affiliated companies be liable for delay caused by defects, for loss of use, or for any indirect, incidental, special, or consequential damages or for any charges or expenses of any nature whatsoever. In no event shall OCM, Inc.'s liability exceed the purchase price paid for the part.*

OCM, Inc.  
1215 Henri Drive, Wauconda, IL 60084  
Toll Free: 866-457-5710 • Phone: 847-462-4258 • FAX: 847-462-4259  
sales@ocm-inc.com