

**GENERAL INSTALLATION PROCEDURES  
FOR USE IN NON-MOVING JOINTS ONLY. HYDROSTATIC HEAD LESS THAN 50 FEET.**

**ATTACHING MC-2005T TO CONCRETE**

**SMOOTH CONCRETE:**

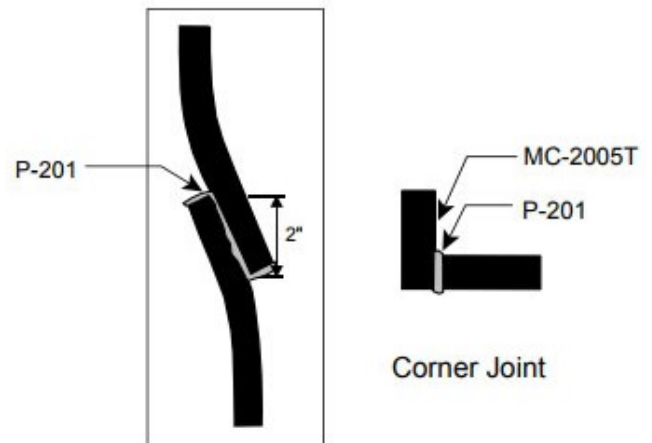
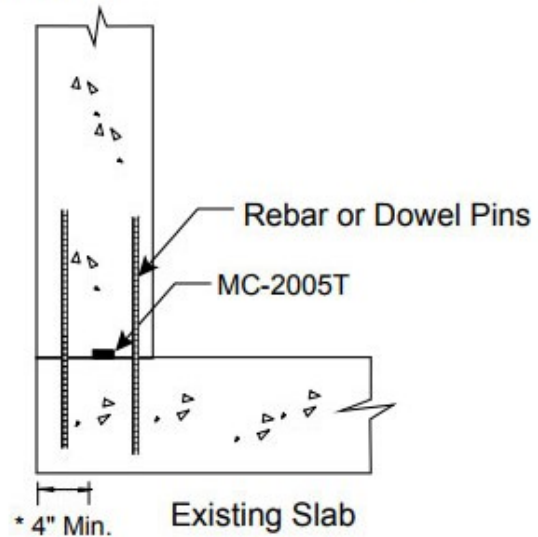
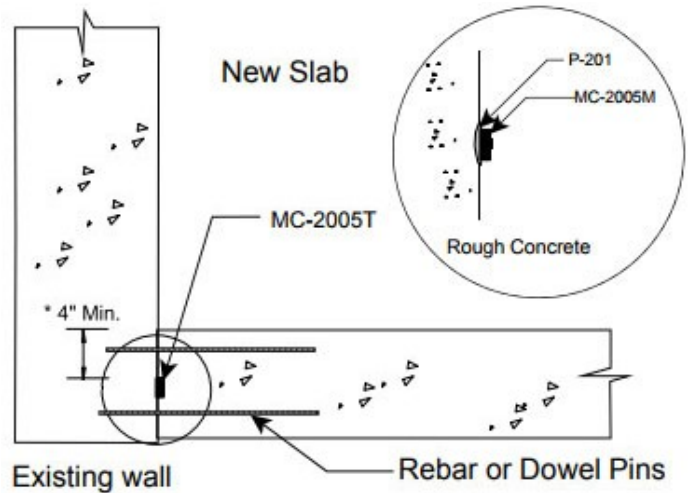
1. Surface of the concrete must be clean, dry and free from any loose debris. MC-2005T has adhesive back for easy installation.
2. Press OCM 75BRTAPE onto the substrate and remove the release paper. Remove the release paper from MC-2005T and press the product very firmly onto the Butyl tape. Check for any gaps between the product and the substrate. If gaps are present, fill the gaps using ADEKA P-201 applied to the side of the strip. Use ADEKA P-201 on concrete joints and on side-by-side splice joints as usual. You can place concrete immediately, no waiting for curing time.
3. Place concrete without displacing or disturbing the position of the waterstop.

**ROUGH CONCRETE:**

1. Surface of the concrete must be clean and free from any loose debris or standing water.
2. Apply bead of ADEKA ULTRASEAL® P-201. Use enough P-201 to fill any void between MC- 2005T and the concrete surface)
3. Remove release paper and firmly press MC- 2005T into the P-201 while it is still in the paste state.
4. Use a wet tool or gloved finger to remove any excess P-201. Allow curing time (estimate 1~2 days) before placing concrete.
5. Place concrete without displacing or disturbing the position of the waterstop. Conditions may warrant the use of a combination of methods. Keep MC-2005T taut during attaching process. Do not allow any gap between the concrete and the MC-2005T.

**IMPORTANT:** The recommended minimum concrete coverage is 4"~5". Call your local ADEKA ULTRASEAL® Representative or (800) 999-3959 for exact coverage details.

**NOTE:** The information contained herein is based on our present state of knowledge and is intended to provide general notes on Adeka Waterstops and their uses. Any recommendations or suggestions, which may be made, are without guarantee, since the conditions of use are beyond our control. Furthermore, nothing contained in this publication shall be construed as a recommendation for any use that may infringe patent rights. Readers are cautioned to satisfy themselves as to the suitability of such goods for the purposes intended prior to use.



**OCM, Inc.**  
 1120 Peterson Road, Grayslake, IL 60030  
 Toll Free: 866-457-5710 • Phone: 847-462-4258  
 FAX: 847-462-4259  
 www.adeka.com • www.ocm-inc.com • sales@ocm-inc.com